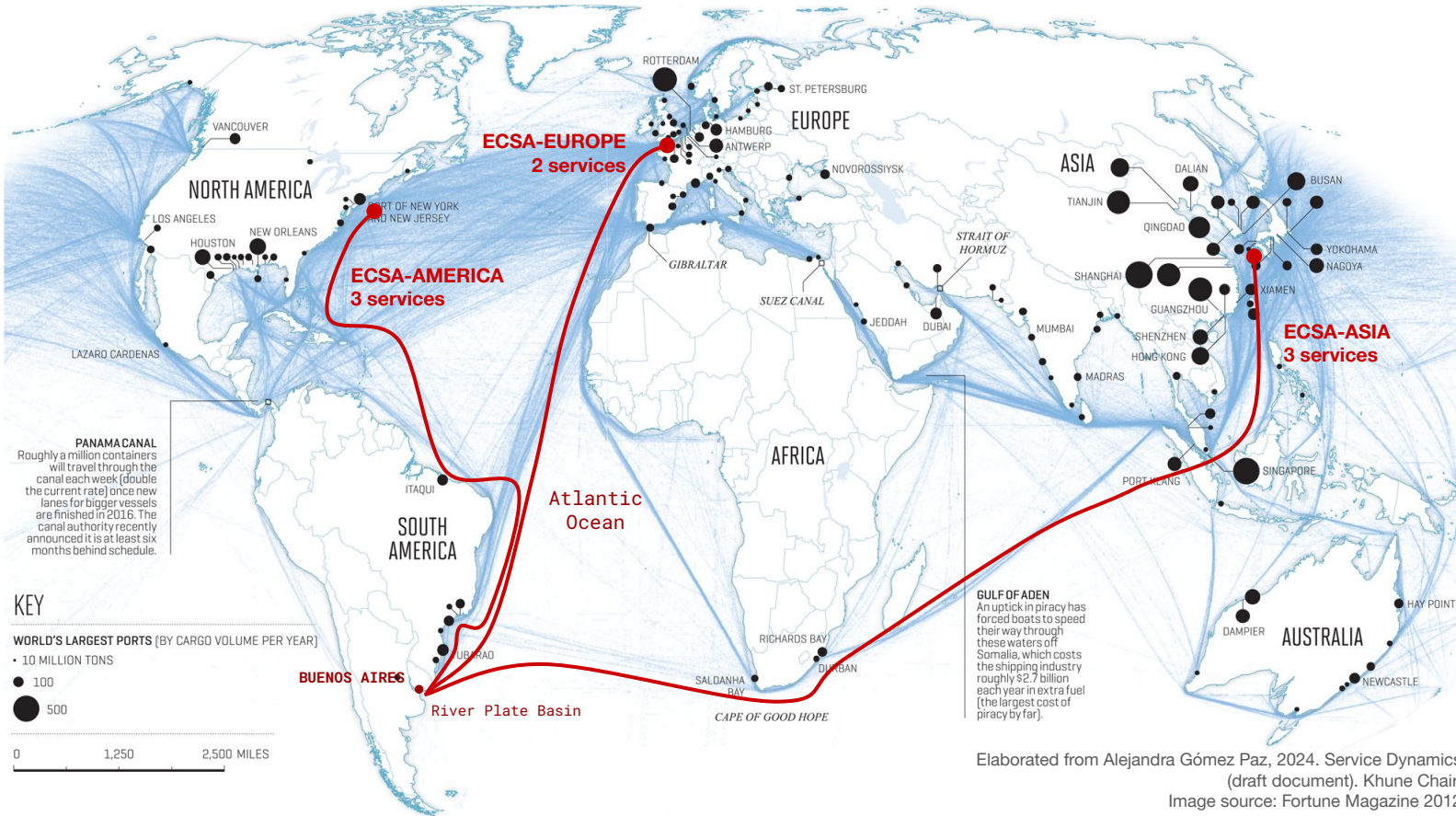


# Paseo del Bajo Parks, Esplanade & Northern portal Corporación Puerto Madero

Official selection 2024 - AIVP Prize Antoine Rufenacht

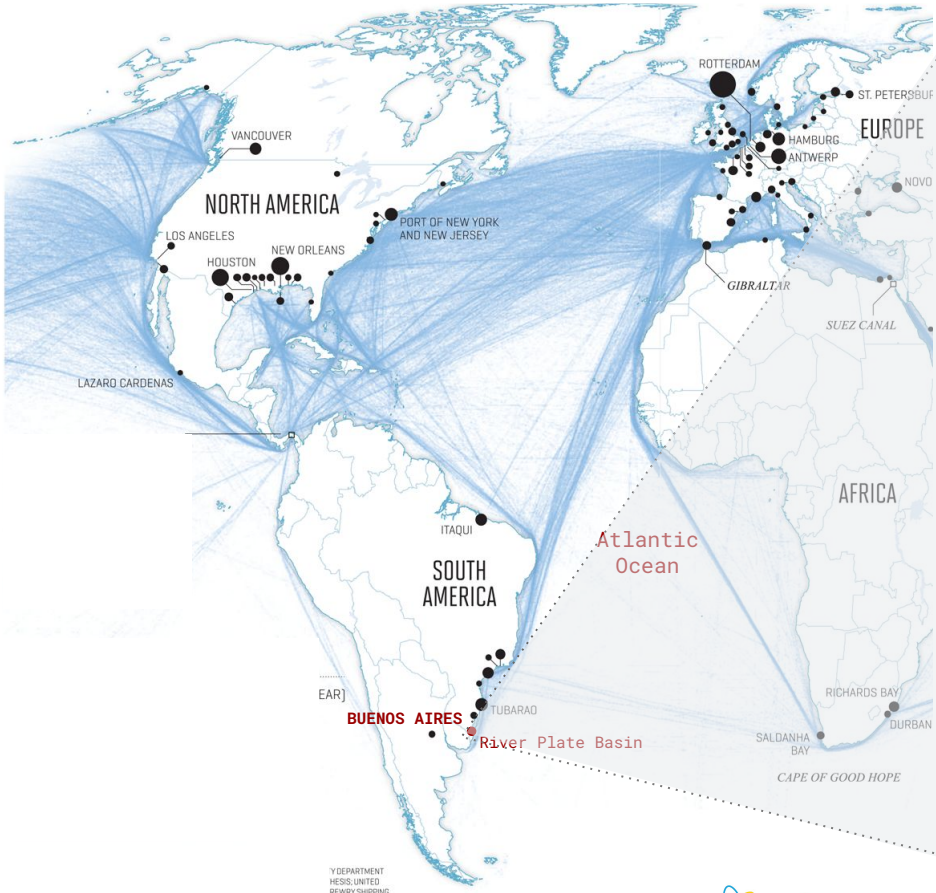
Mg. Arch. Daniela Emilia Couto

# Map of sea shipping routes - East Coast of South America links 2024



Elaborated from Alejandra Gómez Paz, 2024. Service Dynamics (draft document). Khune Chair. Image source: Fortune Magazine 2012

# Buenos Aires Port & its territorial significance



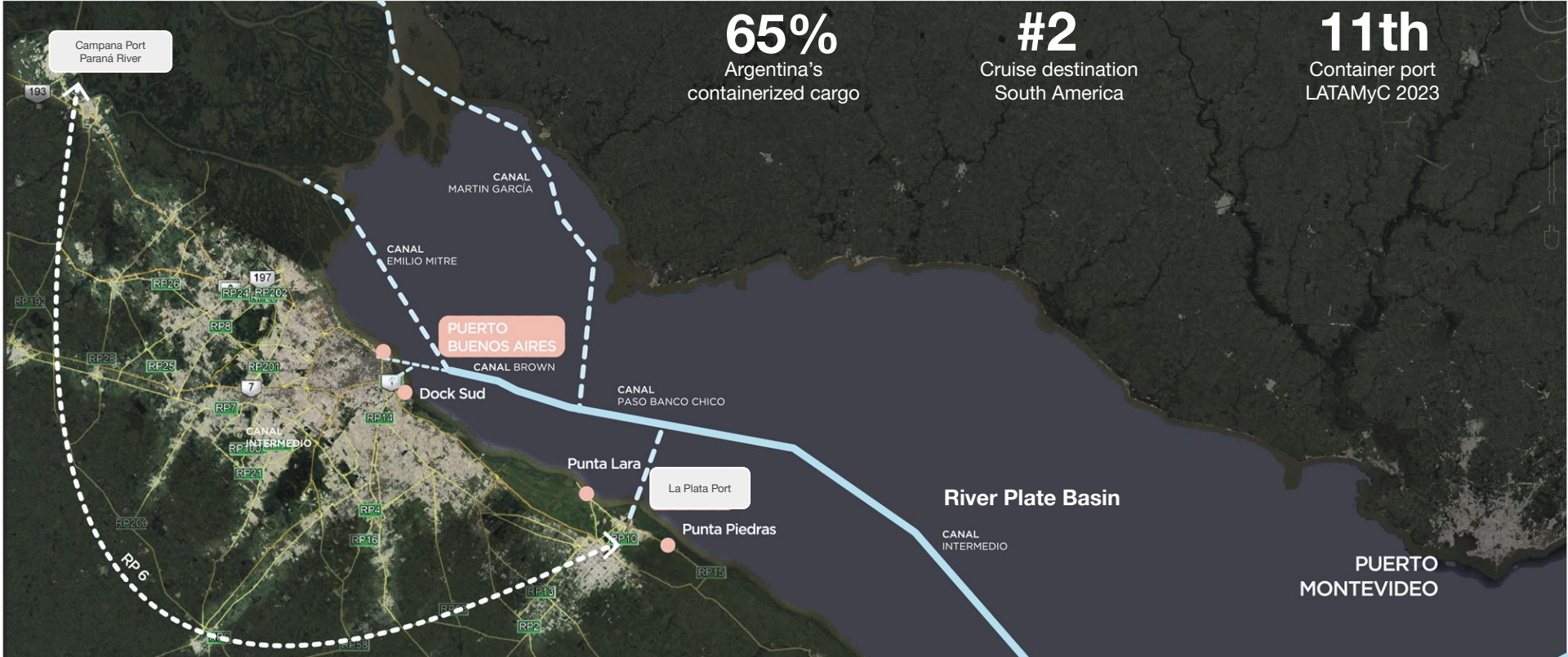
## Río de la Plata basin



65%  
Argentina's  
containerized cargo

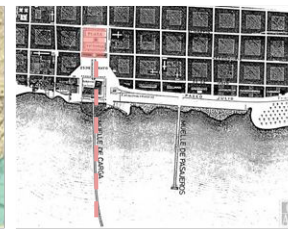
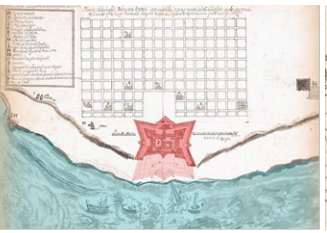
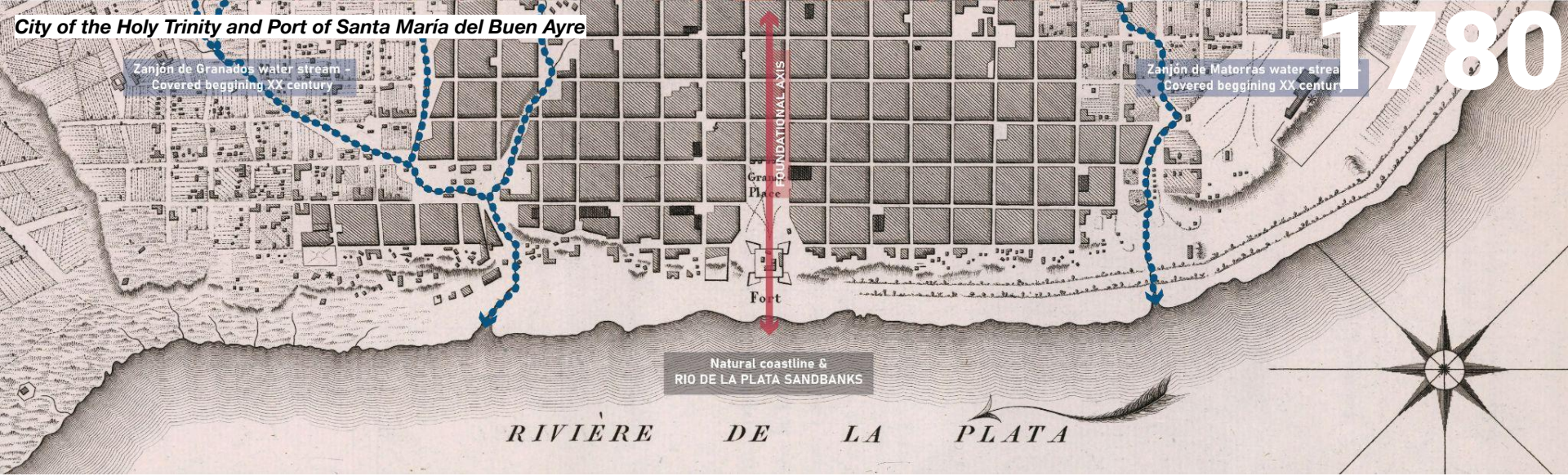
#2  
Cruise destination  
South America

11th  
Container port  
LATAMyC 2023



**City of the Holy Trinity and Port of Santa María del Buen Ayre**

1780



**1580 GARAY** -Fundación de Buenos Aires  
Plano de división de tierras

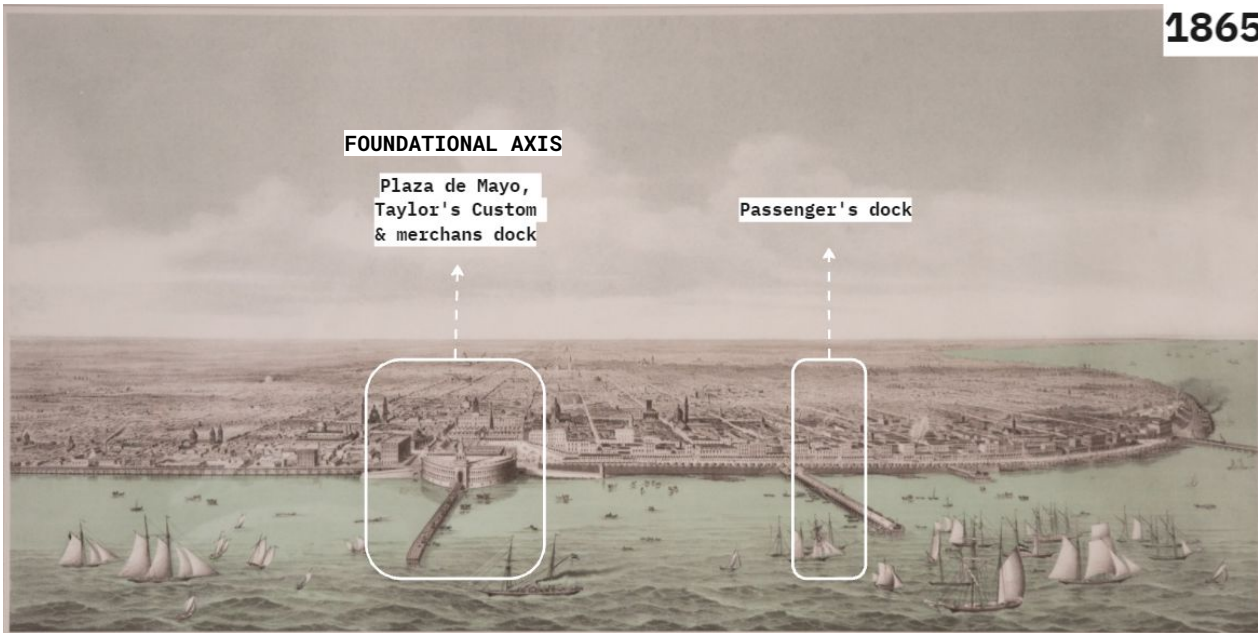
**1708 BERMUDEZ** - Plano general

**1778** - Plano general - *Virreinato del Río de la Plata*

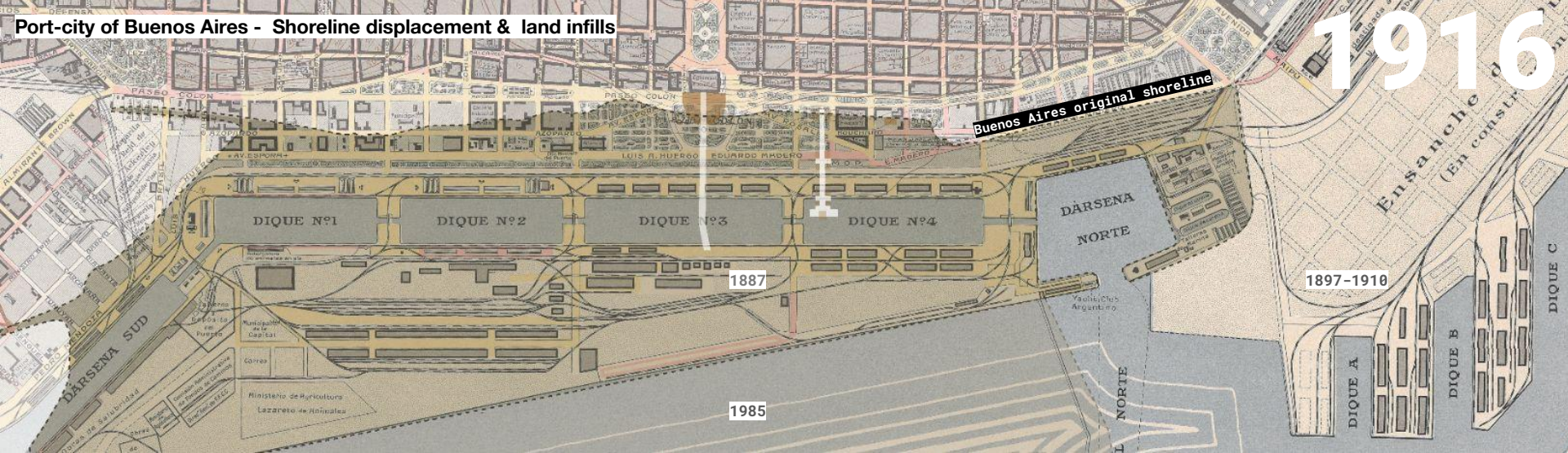
**1854-57** - Muelles de Carga y Pasajeros

**1895 GUNCHE, WIEBECK, TURTL**

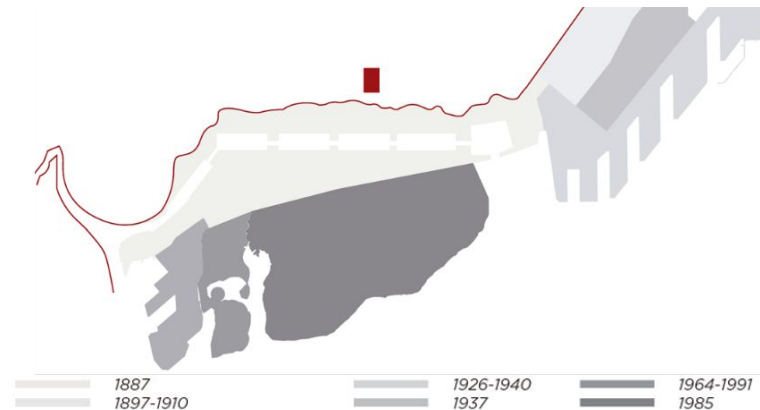
First port infrastructures at Buenos Aires foundational site



# Port-city of Buenos Aires - Shoreline displacement & land infills



PORT DEVELOPMENT	TPOLOGY	CONSTRUCTION WORKS
<b>NEW CUSTOMS &amp; CATALINAS PIERS</b>	PIERS	1755 - 1872
<b>PUERTO MADERO</b>	4 INTERLINKED DOCKS + 2 ACCESS BASINS	1887 - 1898
<b>PUERTO NUEVO</b>	5 OVERSEAS BAYS + 1 COASTAL DOCK	1911-1919



First port infrastructures at Buenos Aires foundational site







Port-city of Buenos Aires at present

BUENOS AIRES PORT  
Northern area

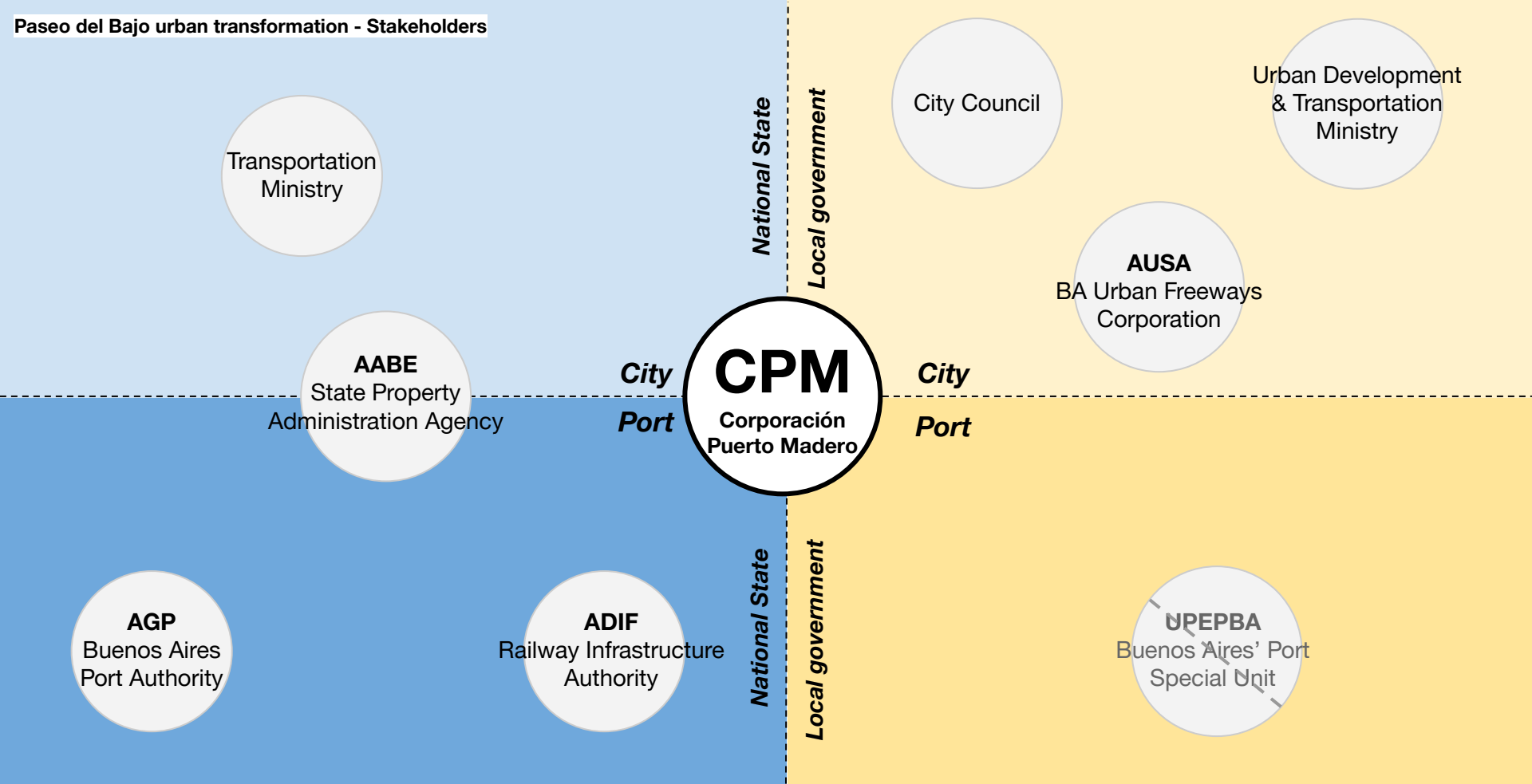
Puerto Madero  
urban development

BUENOS AIRES PORT  
Southern area

Costanera Sur  
Ecological Reserve

River Plate

Paseo del Bajo urban transformation - Stakeholders



Paseo del Bajo urban transformation - Stakeholders

Transportation  
Ministry

**AABE**  
Agency of  
State Property Management

**AGP**  
Buenos Aires  
Port Authority

**ADIF**  
Railway Infrastructure  
Authority



City Council

Urban Development  
& Transportation  
Ministry

**AUSA**  
BA Urban Freeways  
Corporation

**UPEPBA**  
Buenos Aires' Port  
Special Unit

# 2016



Port jurisdiction

City-shoreline pedestrian flow

Architectural Heritage Protection

Urban barriers





Port jurisdiction

Light & Cargo transport infrastructure

Paseo del Bajo Parks

Land requalification



## PASEO DEL BAJO URBAN TRANSFORMATION

- + 50 yrs on BA planning offices
- + 25 engineering projects
- 7 km long & 20 hectares transformation

Specific law passed to authorise the **sale of plots of public land**, with the proceeds to go towards **financing the project**

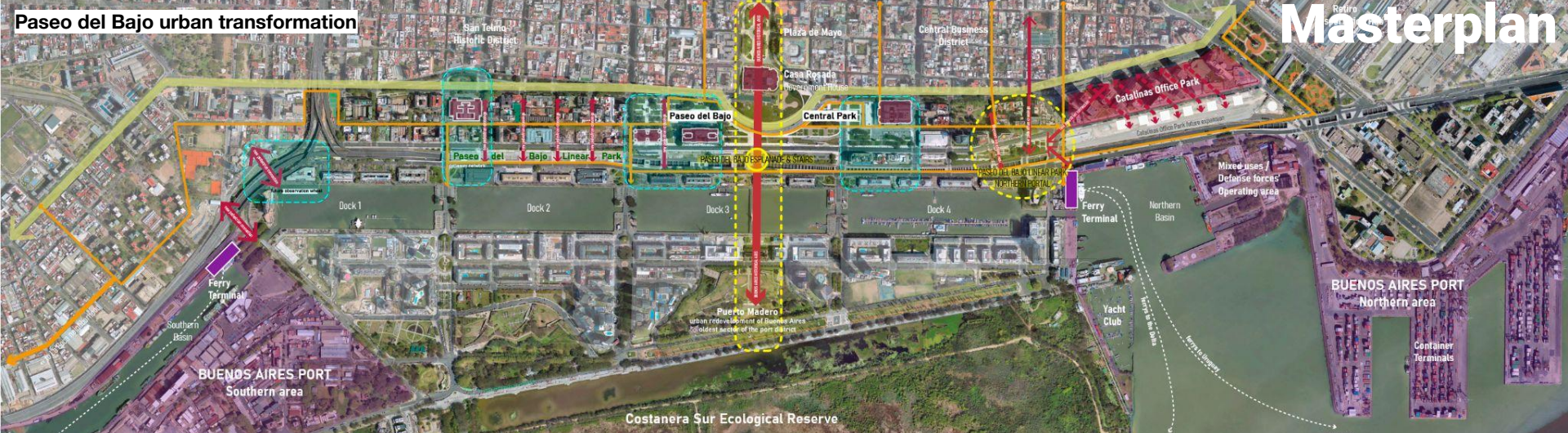
### GLOBAL COST

650M	US\$ PDB Freeway
55M	US\$ PDB Parks&Bv
15M	US\$ PDB BRT

**720M US\$ INVESTMENT**



## Paseo del Bajo urban transformation

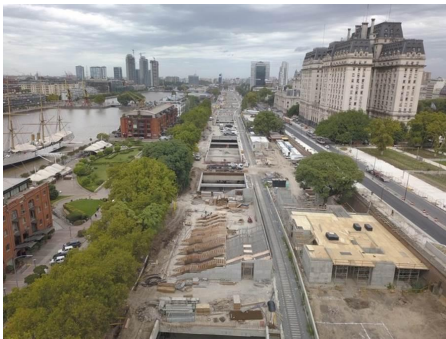


Port jurisdiction

Sustainable mobility network:  
New pedestrian connections + cycleways

Architectural Heritage Protection

Urban programmatic nodes





# Paseo del Bajo highlights

## #1 From a transportation project to an urban reconversion plan

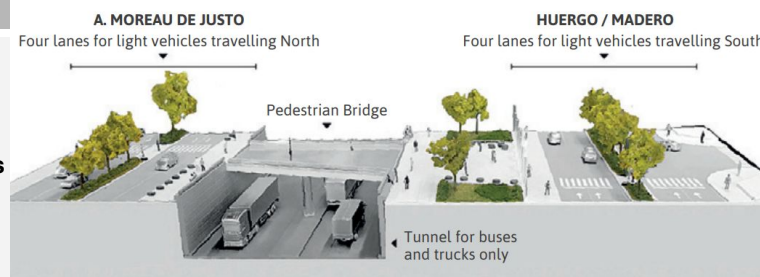


### PASEO DEL BAJO MOBILITY TRANSFORMATION FACTS

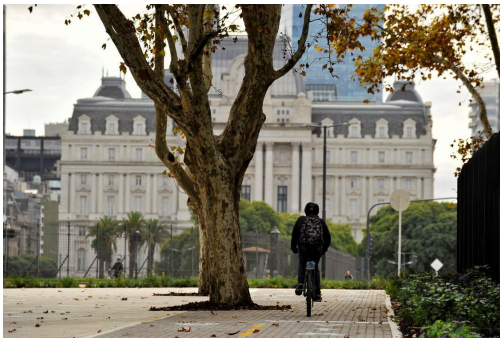
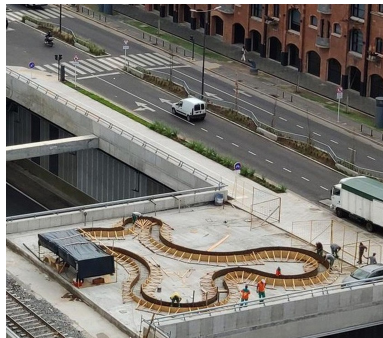
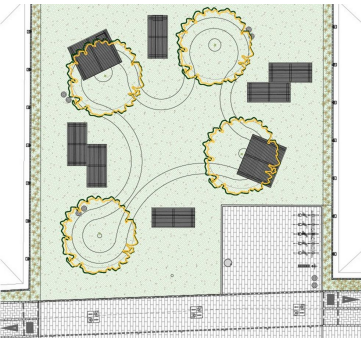
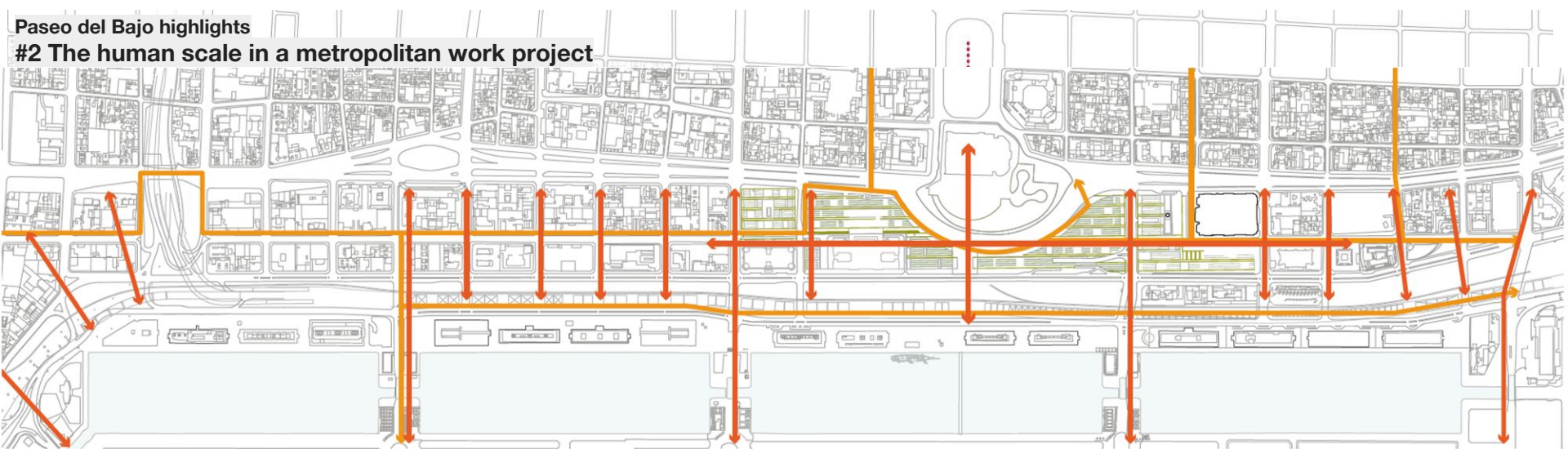
PASSENGER, LIGHT & CARGO TRANSP. NETWORKS

- Decrease **congestion & air pollution** at CBD
- Decrease **logistic costs** to BA port (North-South)
- Improve **city-river connection** (East-West)
- Enhance **walkability** & develop more **green spaces**

- Del Bajo BRT** + 30 bus lines  
+ 300K daily users  
- 20% time travel N-S
- New **4-lane boulevards N-S** + 4 new **city-river crossings**
- 9 new **city-river pedestrian connections**
- Freeway** exclusive cargo & long distance passenger transportation



Paseo del Bajo highlights  
 #2 The human scale in a metropolitan work project



**THE HUMAN SCALE**  
 SUSTAINABLE MOBILITY

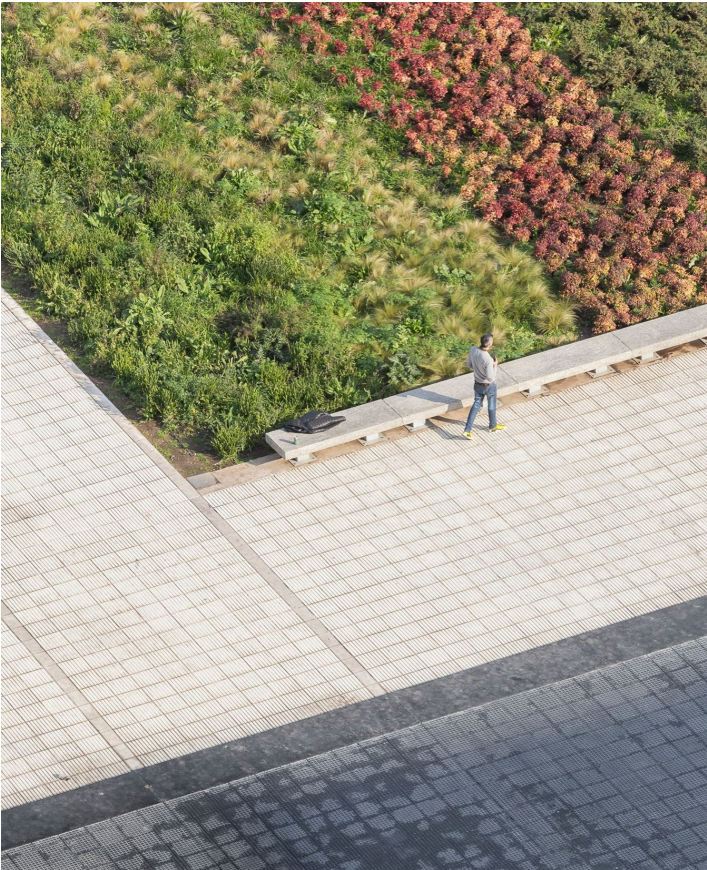
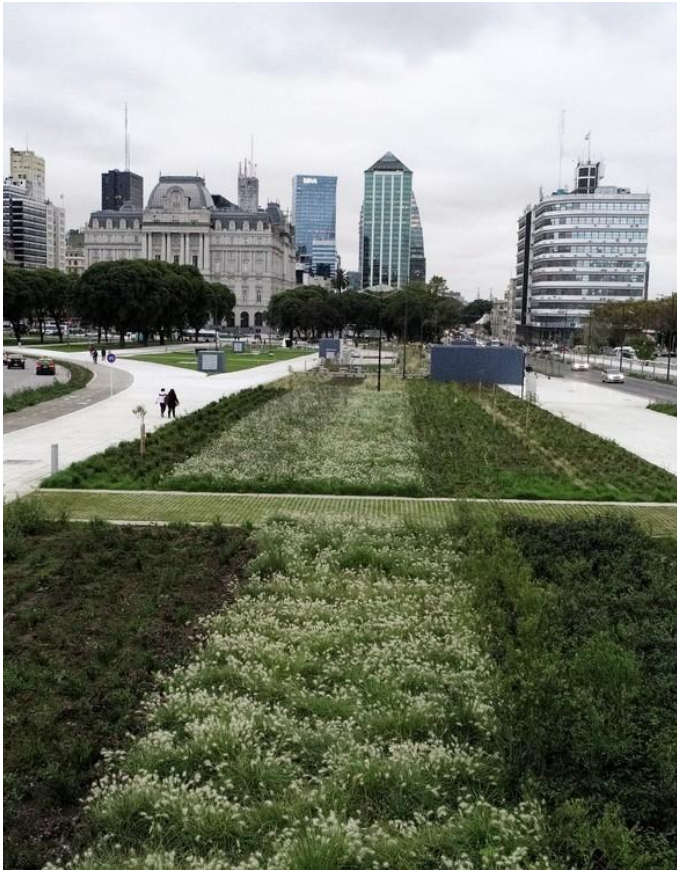
**Cycleways** +8.5 km  
 connecting N-S &  
 port-city interface

**9 new pedestrian crossings**

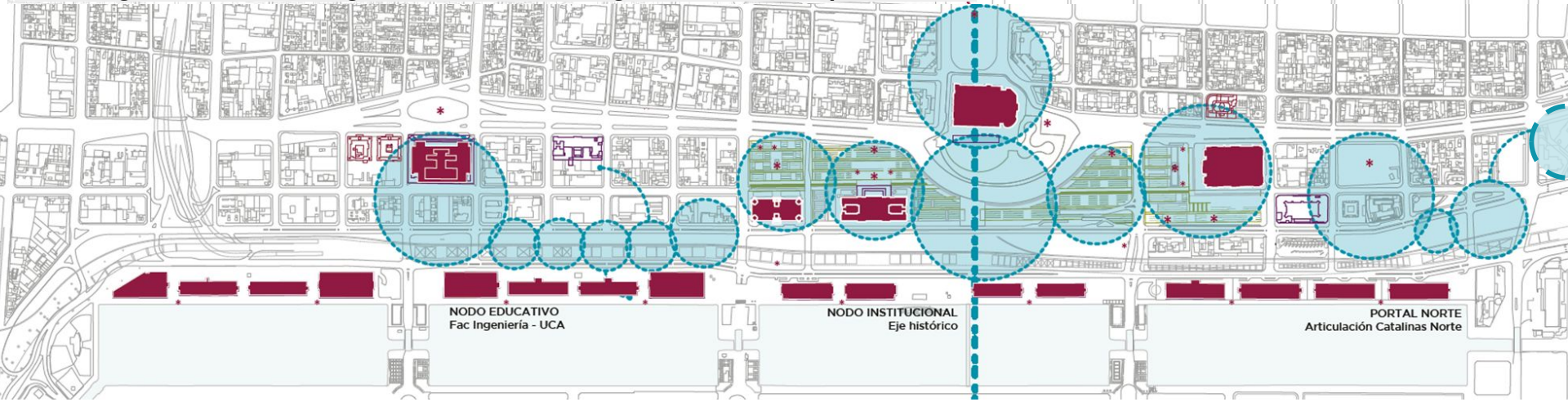




### #3 The recuperation of autochthonous flora identity & its role as a port-city articulator

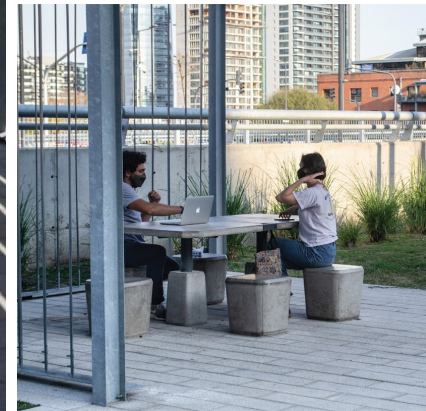
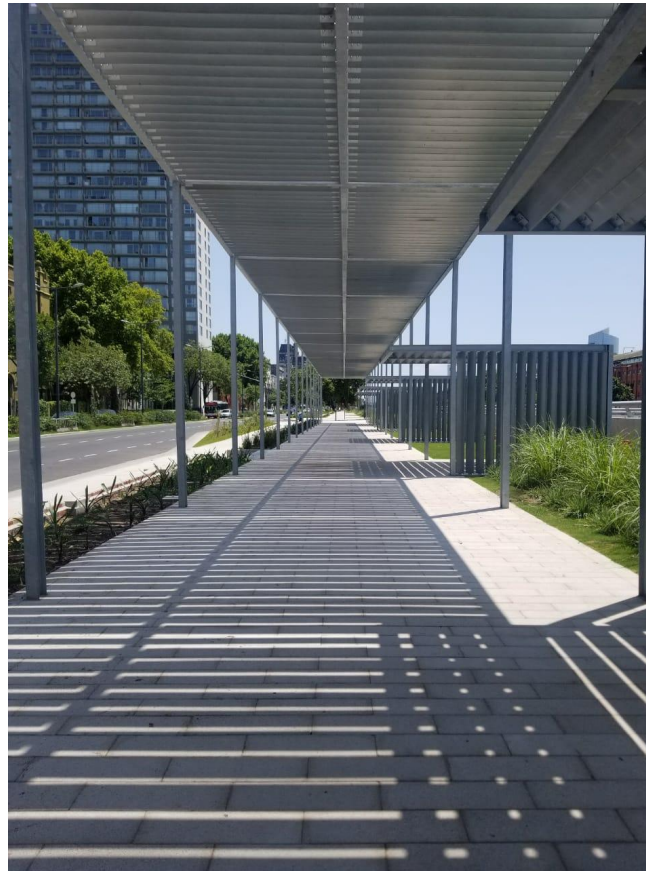


# #4 Heritage as landmark. Programmatic nodes through the value of the preexistence



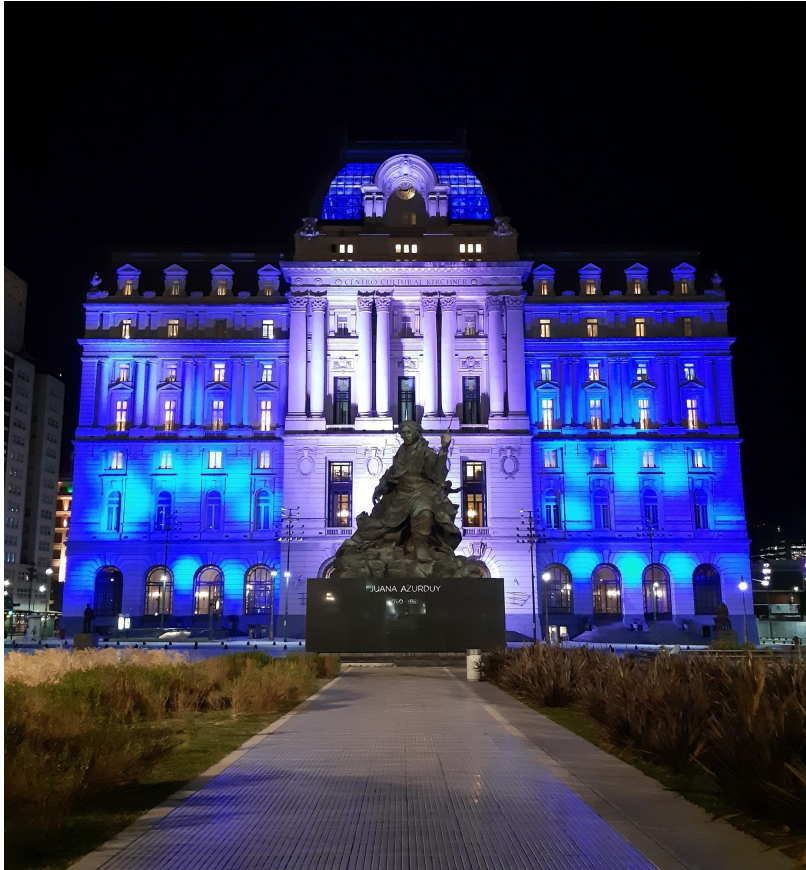
## Open-air Cowork pergola

### #4 Programmatic nodes through the value of the preexistence



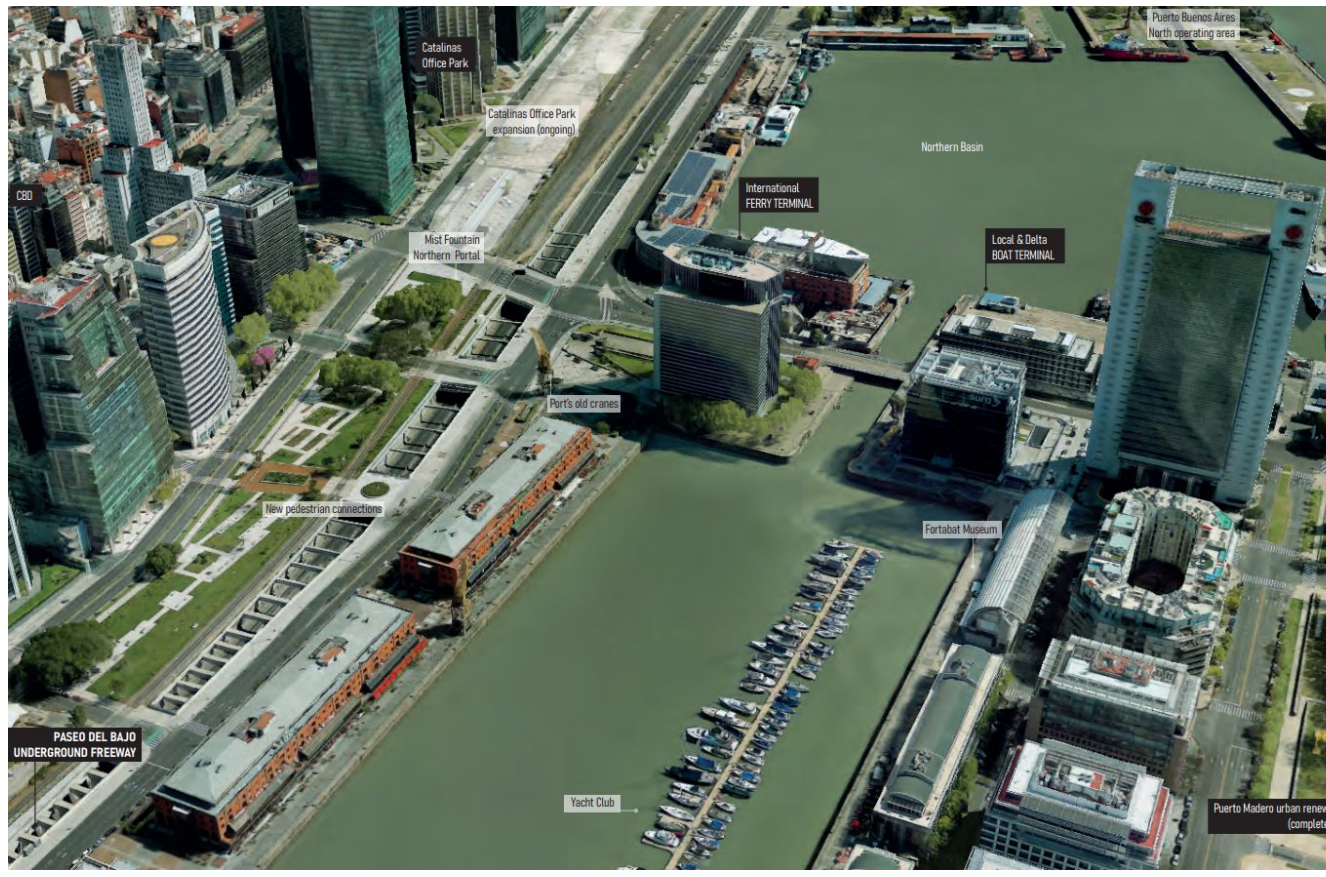
# Kirchner Cultural Center & Juana Azurduy statue relocation

## #4 Programmatic nodes through the value of the preexistence

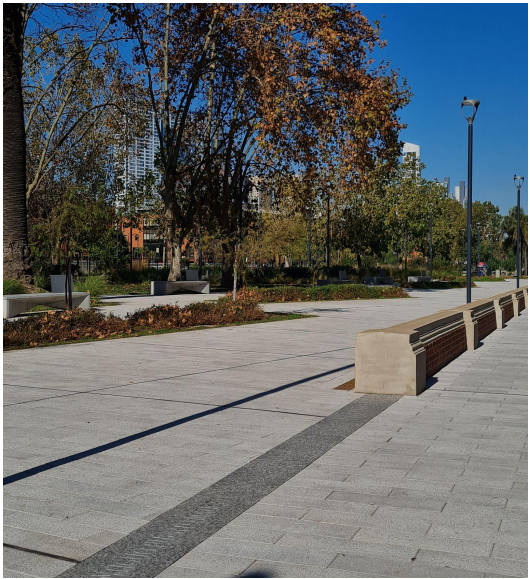


# Northern Portal - International Ferry Station & Catalinas office park

## #4 Programmatic nodes through the value of the preexistence



Northern Portal - International Ferry Station & Catalinas office park  
#4 Programmatic nodes through the value of the preexistence



Northern Portal - International Ferry Station & Catalinas office park  
#4 Programmatic nodes through the value of the preexistence



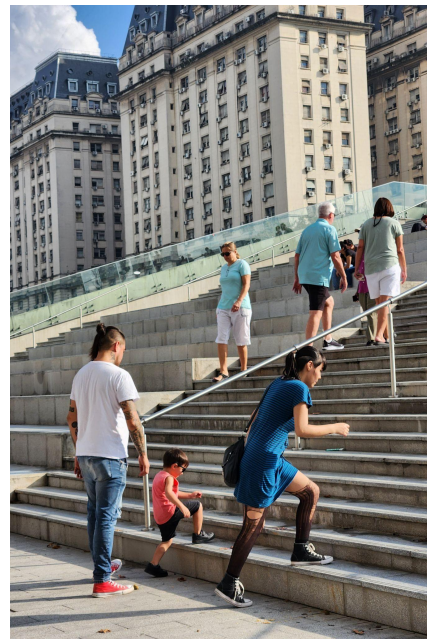
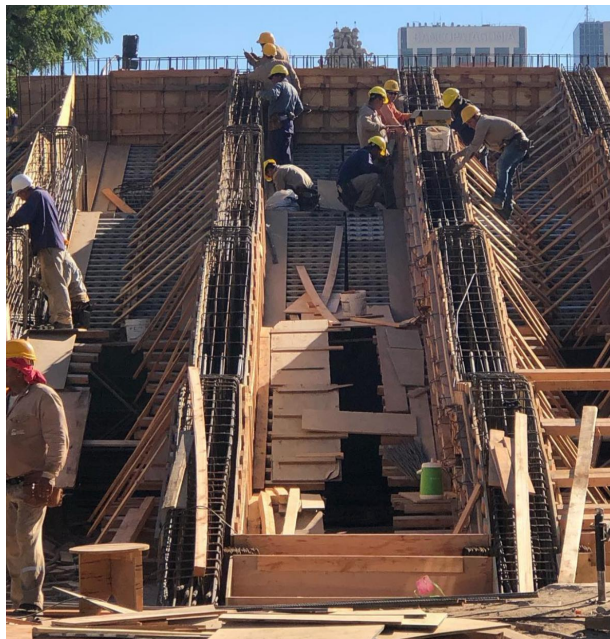


# PORT-CITY HISTORICAL AXIS: PASEO DEL BAJO ESPLANADE

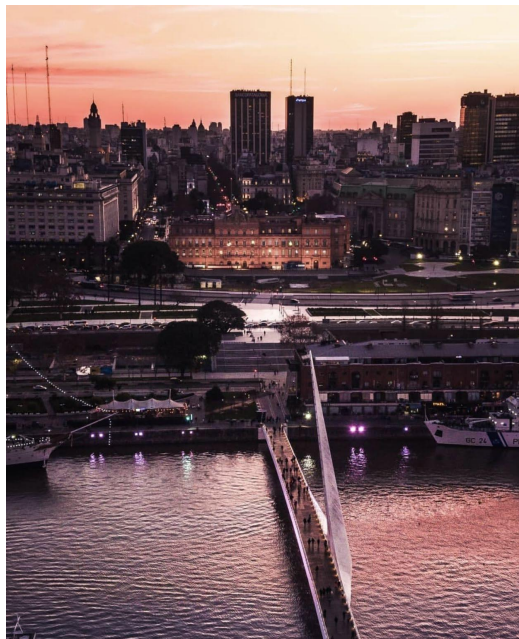
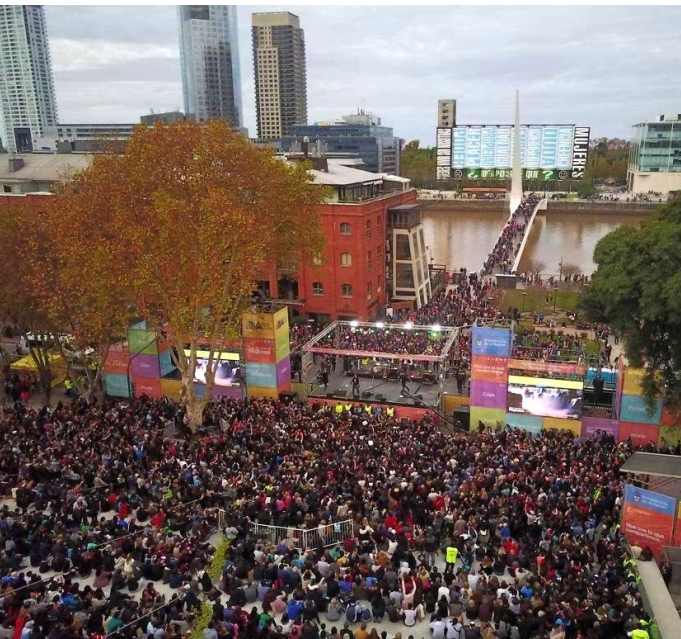
## #4 Heritage as landmark



PORT-CITY HISTORICAL AXIS: PASEO DEL BAJO ESPLANADE  
#4 Heritage as landmark



**PORT-CITY HISTORICAL AXIS: PASEO DEL BAJO ESPLANADE**  
**#4 Heritage as landmark**



**PORT-CITY HISTORICAL AXIS: PASEO DEL BAJO ESPLANADE**  
**#4 Heritage as landmark**



"La Casa Rosada" - 1910. Ángel Della Valle. Lithography.



Paseo del Bajo Esplanade - 2024.

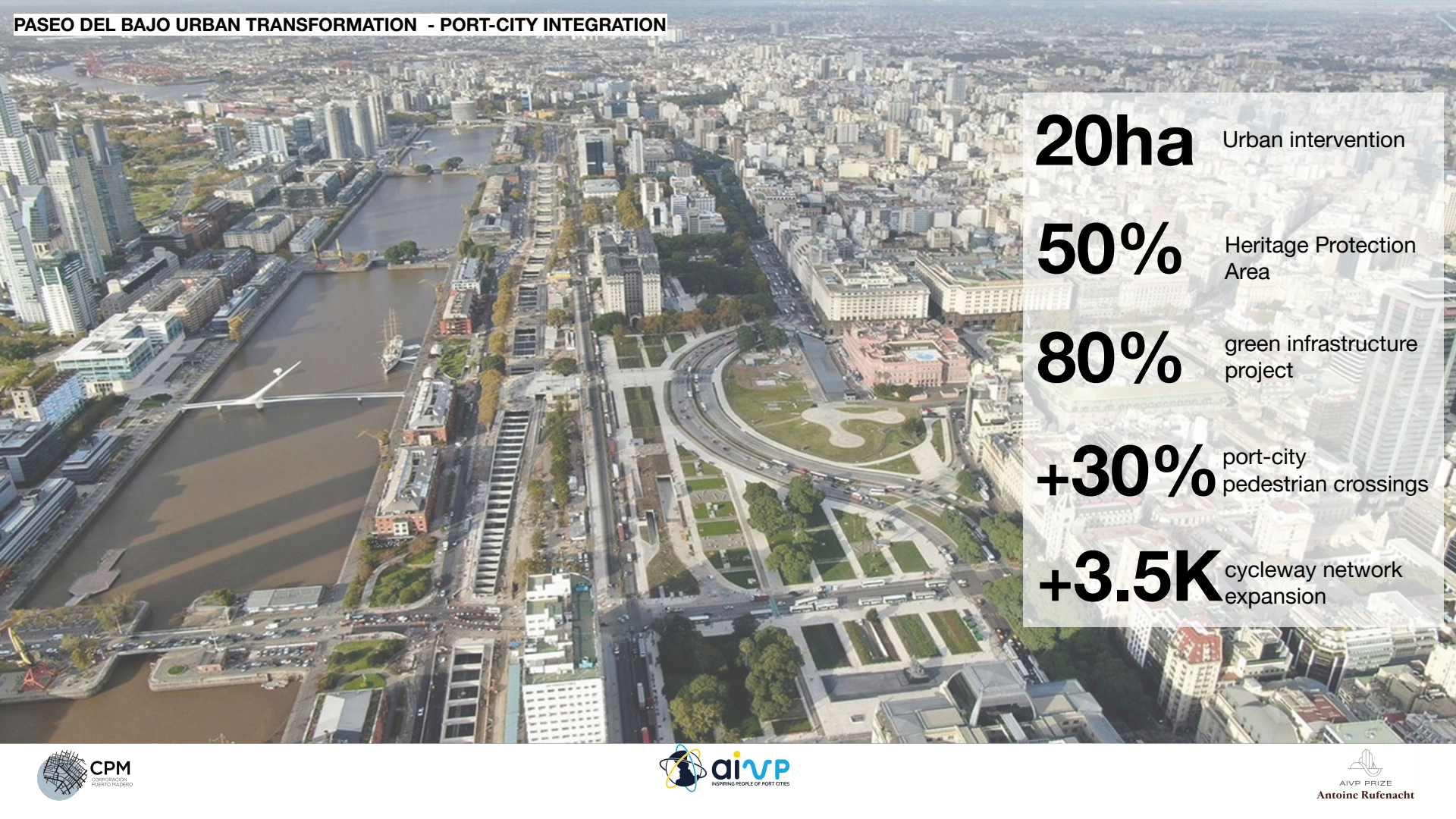
## PASEO DEL BAJO - INFRASTRUCTURE EFFICIENCY IMPROVEMENTS

**-75%** Freight transportation  
time reduction

**-46%** Freight logistic  
cost reduction

**50%** Port access  
delay reduction

**-15% tCO<sub>2</sub>eq**  
Greenhouse gas emissions  
11.235 tCO<sub>2</sub>eq reduction



# PASEO DEL BAJO URBAN TRANSFORMATION - PORT-CITY INTEGRATION

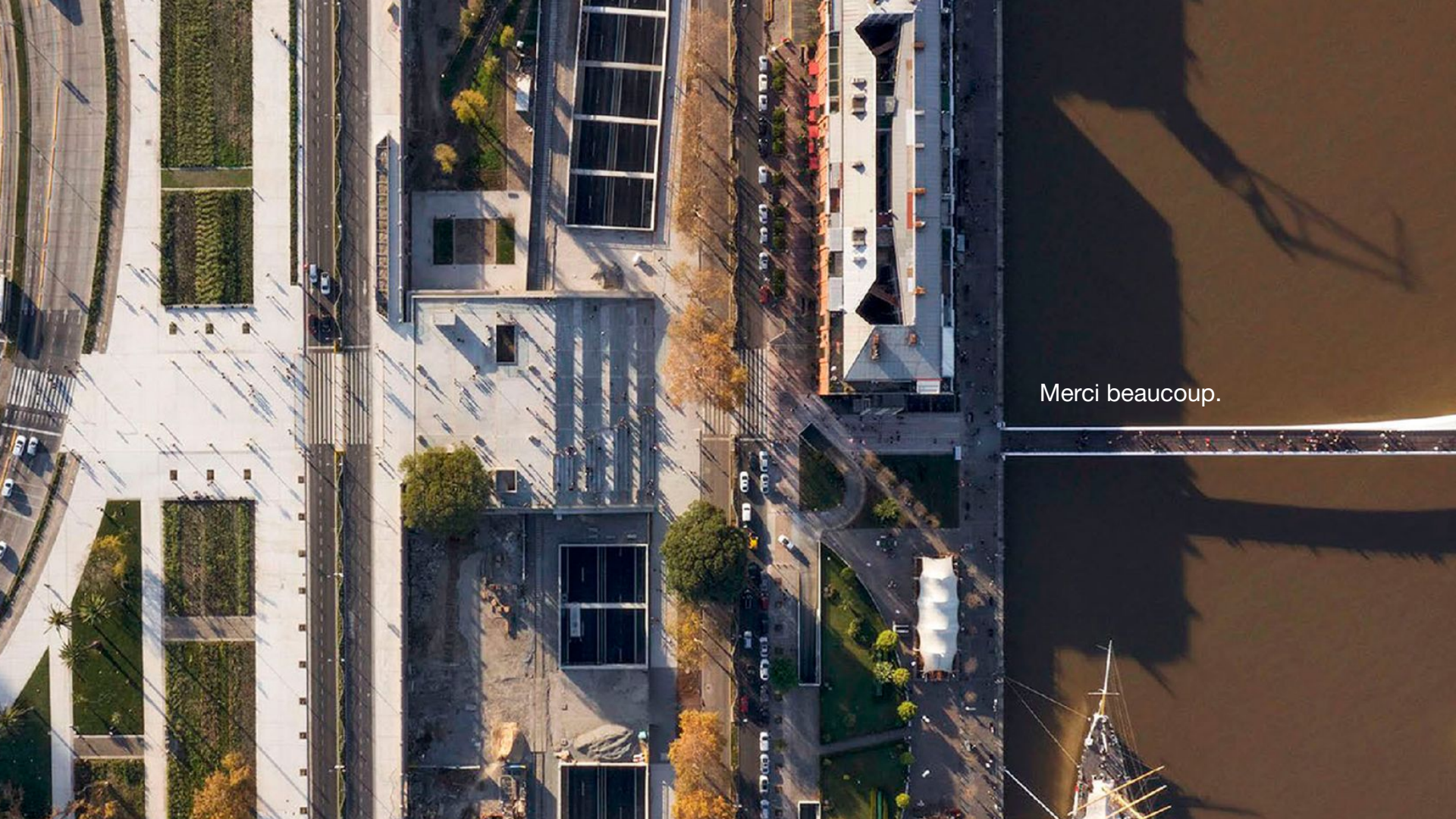
**20ha** Urban intervention

**50%** Heritage Protection Area

**80%** green infrastructure project

**+30%** port-city pedestrian crossings

**+3.5K** cycleway network expansion



Merci beaucoup.