

Duwamish River People's Park, Community Hub & Shoreline Habitat

AIVP Prize Antoine Rufenacht

Jon Sloan

Senior Manager

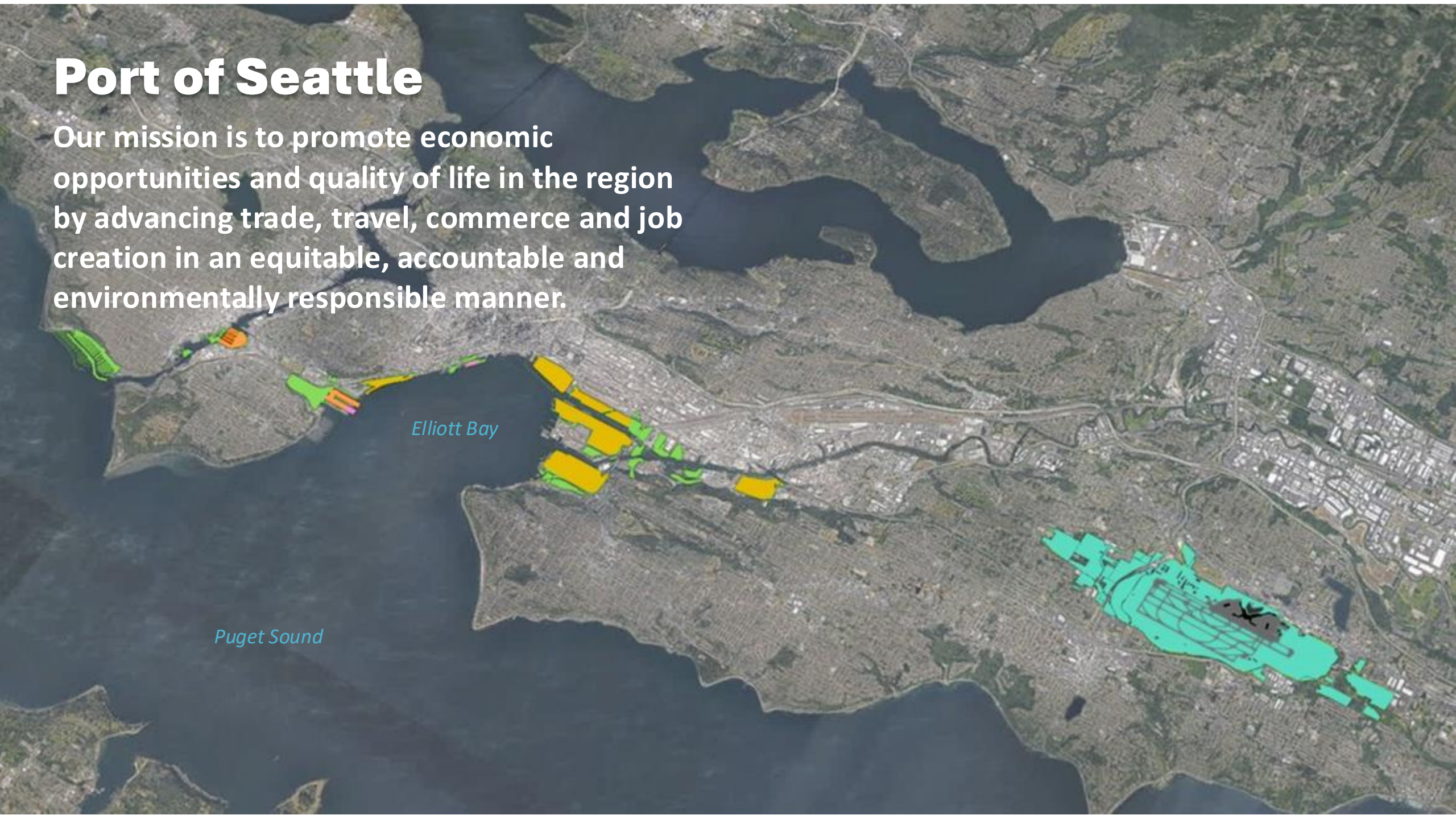
Maritime Env. & Sustainability

Port of Seattle

Our mission is to promote economic opportunities and quality of life in the region by advancing trade, travel, commerce and job creation in an equitable, accountable and environmentally responsible manner.

Elliott Bay

Puget Sound



Duwamish River

The Duwamish River is Seattle's only river.

It's home to over 100,000 jobs and 25% of the manufacturing capacity in the region.

People rely on it for sustenance, transportation, livelihood, and home.

However...

Fish and wildlife in the river have suffered from years of pollution. So have people.

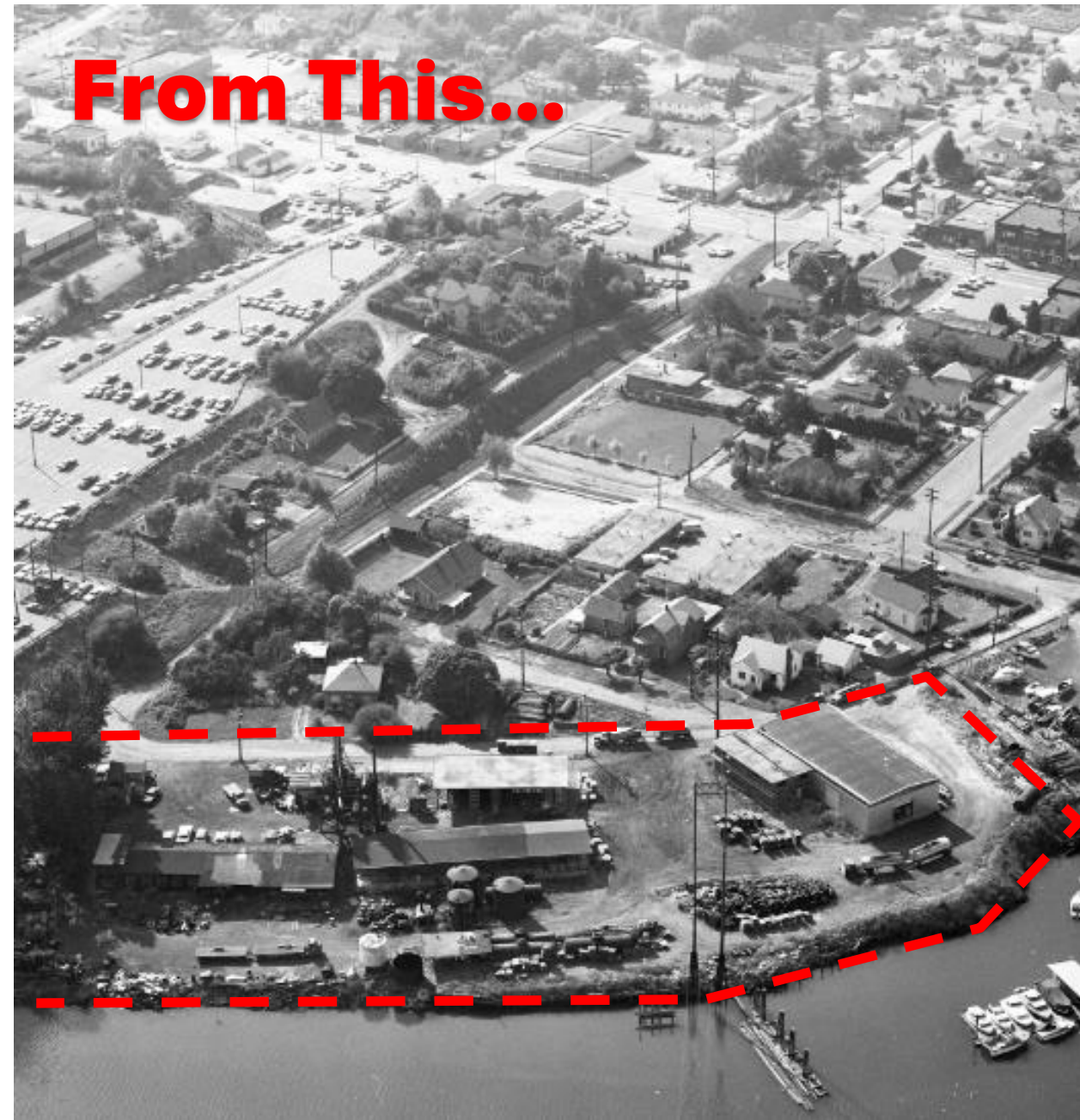
So we worked together with the City to cleanup the neighborhood and transform one of our Duwamish properties into a habitat site, park, and mitigation bank.

Now it's a triple bottom line asset.



TERMINAL 117

From This...



...To This



Sustainable Development



Investing in **Community**



Fostering a **Green Economy**



Restoring **Healthy Habitats**



Project Site: Overview

**Boeing
Property**

**Pocket
Neighbor-
hood**

**Terminal 117
Restoration site**

**Lighted waterway and
habitat viewing platform**

**Restored marsh and
riparian shoreline**

Duwamish Waterway

Artist conception, final design may change.



Project Timeline

1937: Duwamish Manufacturing Company begins producing asphalt at the site

1978: Malarkey Asphalt Company buys site and continues to produce asphalt

1993: Malarkey ceases operations

1999: Port of Seattle acquires property

2001: Site designated a Superfund cleanup

2006: Port responds to City and Community, agrees to turn T-117 into a park/habitat site after cleanup

2012: Port and EPA initiate design for the cleanup project

2015: Cleanup is completed and design for park/habitat begins

2017: Port executes agreement with two treaty-tribes for project

2020: Park and habitat restoration construction begins

2022: Park/habitat complete -- grand opening celebration!

2023: First year of habitat monitoring shows salmon using site

2024: Port transacts mitigation credits with Lockheed Martin



Power of Dialogue and Collaboration

Community



Indigenous Tribes

Industry



City & County Agencies

DUWAMISH RIVER
COMMUNITY HUB
PortSeattle.org/DuwamishValley
Port of Seattle
(206) 402-5113

Port of
Seattle





Design and Permitting Process

Design and permitting campaign took 2.5 years to complete.

Completed by in-house staff with goal to build future capacity.

Required permits from 8 different local, state and federal regulatory agencies.

Required concurrence (and legal agreement) from two treaty-tribes.

Public outreach was critical; note that there were ZERO negative comments.

Important - used an alternative procurement process to engage contractor in design process.



Construction required Incredible Care...



Removed 60,000 tons of contaminated soil, pavement, and buildings.

Imported 20,000 tons of clean backfill and habitat materials.

Air quality, light, dust, noise, and traffic had to be monitored daily.

Crews often had to work at night and around tides – in the winter!

Required intensive agency, tribe, industry and community coordination throughout.

24-hour “hotline” ensured immediate access to construction supervisor.

From Polluted Site to Community Park & Habitat



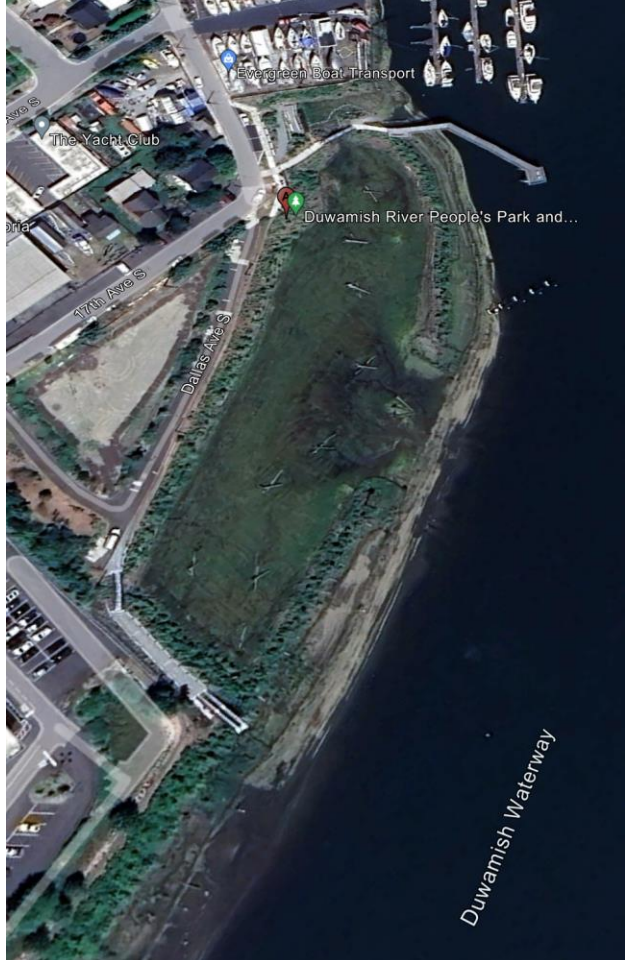
2012



2019



2021



2023

Park Features



Interpretive
Signage

Viewpoint
Pier

Hand-Carry
Boat Launch

View Tower
(Repurposed)

Bridge
(Repurposed)

Entry
Garden &
Sculpture

Amphitheater

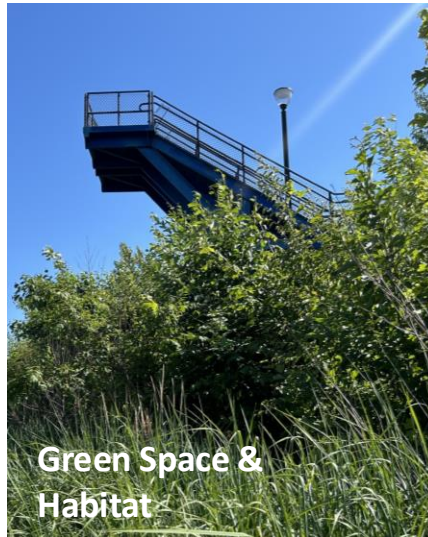
Stepping
Stones

ADA-
Accessible
Pathways

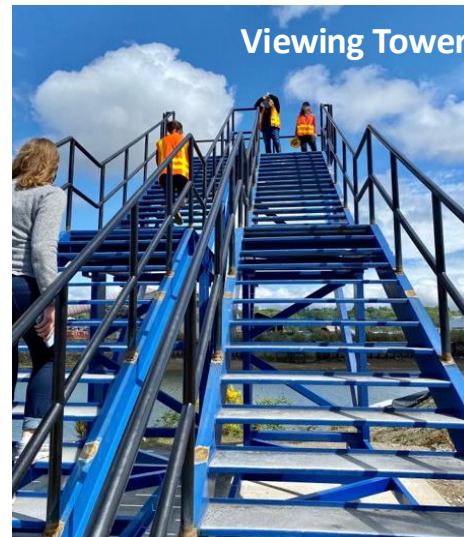
The Project now Connects People to the River...



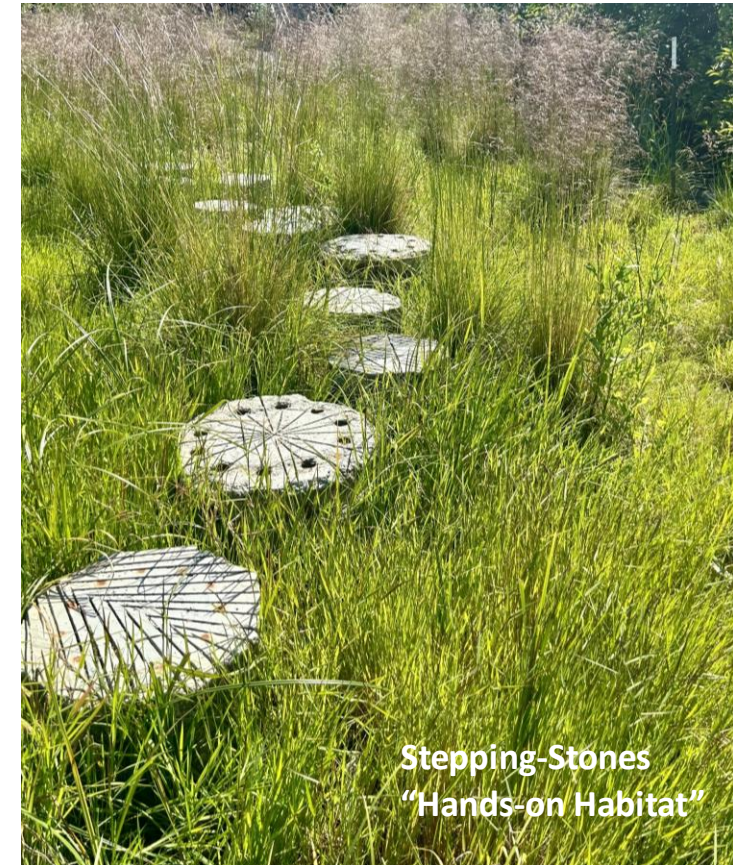
Green Jobs Training



Green Space &
Habitat



Viewing Tower



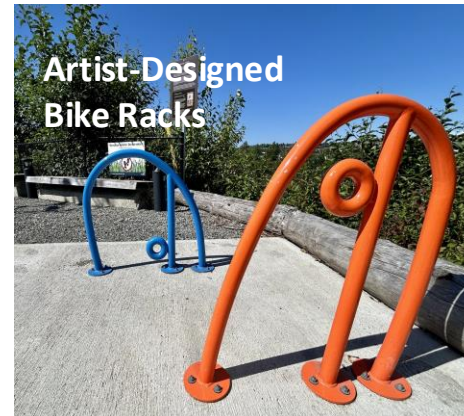
Stepping-Stones
"Hands-on Habitat"



Boat
Launch



Public Art



Artist-Designed
Bike Racks



Community Hub

...and it Connects Fish & Wildlife to Healthy Habitat!



Six (6) hectares of estuarine habitat restoration with over 600 meters of shoreline.

Includes more than 50,000 native trees, shrubs, and marsh plants.

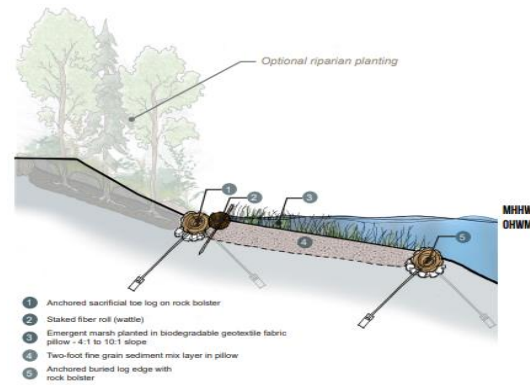
Provides a net carbon sequestration benefit of over 1,000 metric tons of CO2 equivalent.

Over 1,200 salvaged logs were used to provide shoreline stability and habitat complexity.

Many of the plants were harvested from other Port restoration sites (“donor” plants).

Design accommodates 0.5m of sea level rise.

Meaningfully contributes to salmon and orca recovery goals.



Financed with Credit Sales Revenue (\$48m)

The project was awarded 521.5 "mitigation credits."

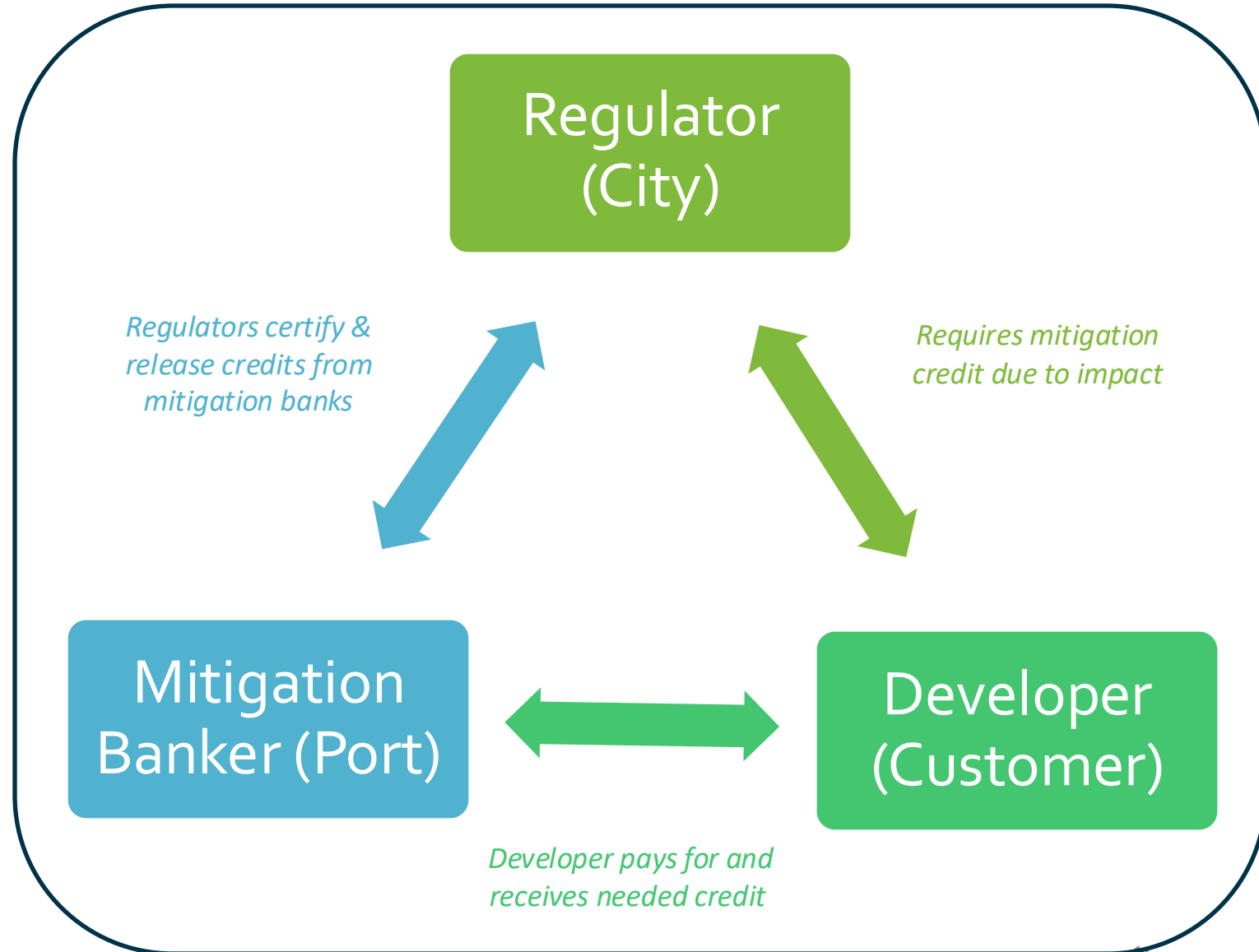
Sold most of the credits for \$48m -- which is the largest mitigation transaction in the region.

Port remains responsible for monitoring and stewardship in perpetuity.

The revenue from credit sales will support additional habitat and park projects.

Cost-effective mitigation credits support economic development in City.

The site is also home to our Green Jobs Training Program.



Is this Sustainable Development?



Investing in **Community**



Fostering a **Green Economy**



Restoring **Healthy Habitats**



Are there environmental benefits?

In one tide cycle in year 1, our monitoring biologists counted:

2,352 Chum salmon

237 Chinook salmon

900 Other fish



Are there Community Benefits?



A CELEBRATION FOR OUR RIVER

DUWAMISH RIVER FESTIVAL

PEOPLE'S PARK
IN SOUTH PARK

8700 DALLAS AVE S,
SEATTLE, WA 98108

- FREE FOOD
- ENTERTAINMENT
- LIVE MUSIC
- KID'S ACTIVITIES
- PETTING ZOO
- FREE KAYAKING
- INTERACTIVE BOOTHS

SATURDAY 12 PM
AUGUST 3, 2024 THROUGH
5 PM

WWW.DRCC.ORG

Are there financial benefits?

Generated 521.5 mitigation credits

\$48m in sales so far

Another \$4m in sales pending

Positive Return on Investment (ROI)

Supports Green Jobs Training



Port and City

The Duwamish River is the City of Seattle's only river.
The Port of Seattle is the fabric that it flows through.
It's not just an industrial waterway...
It's a triple bottom line asset.

Community



Economy



Environment



Thank you.

